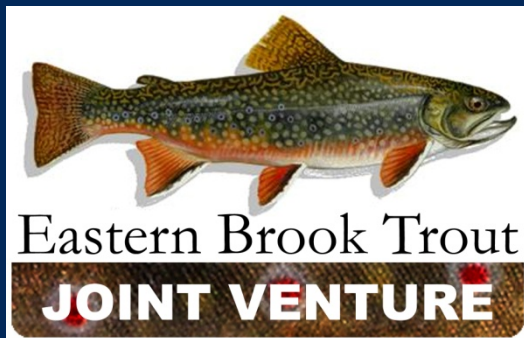


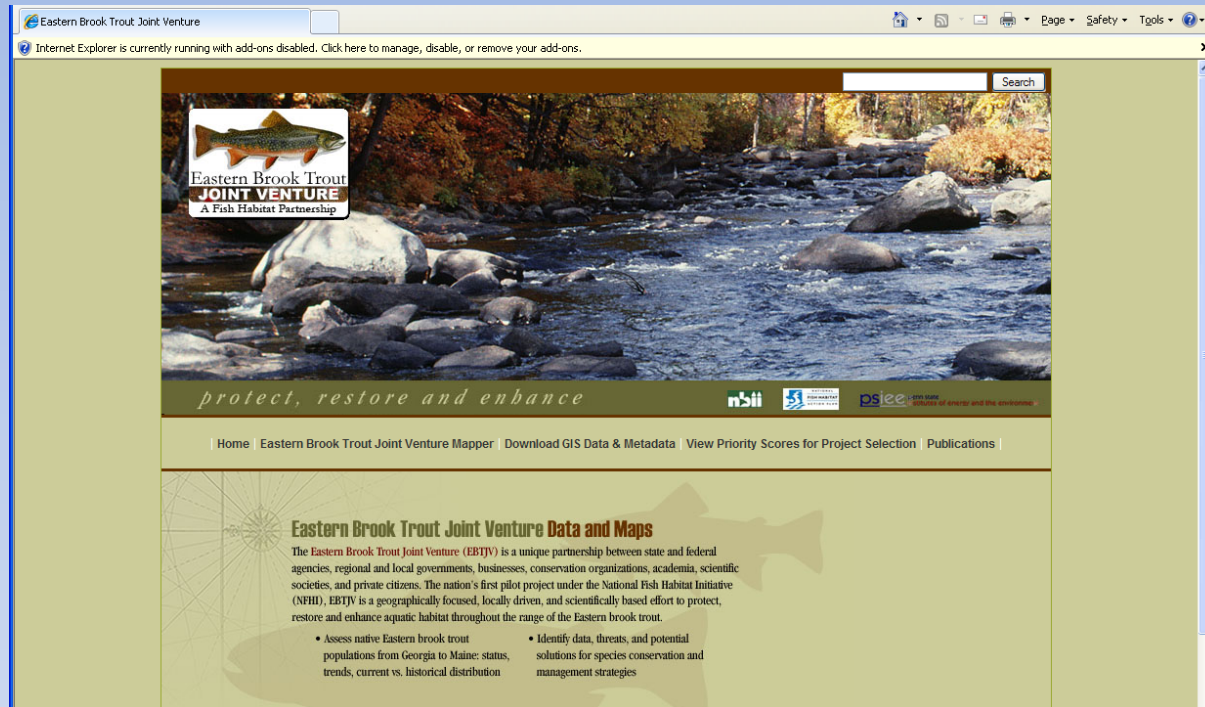
# Data

by Shelaine Curd Hetrick



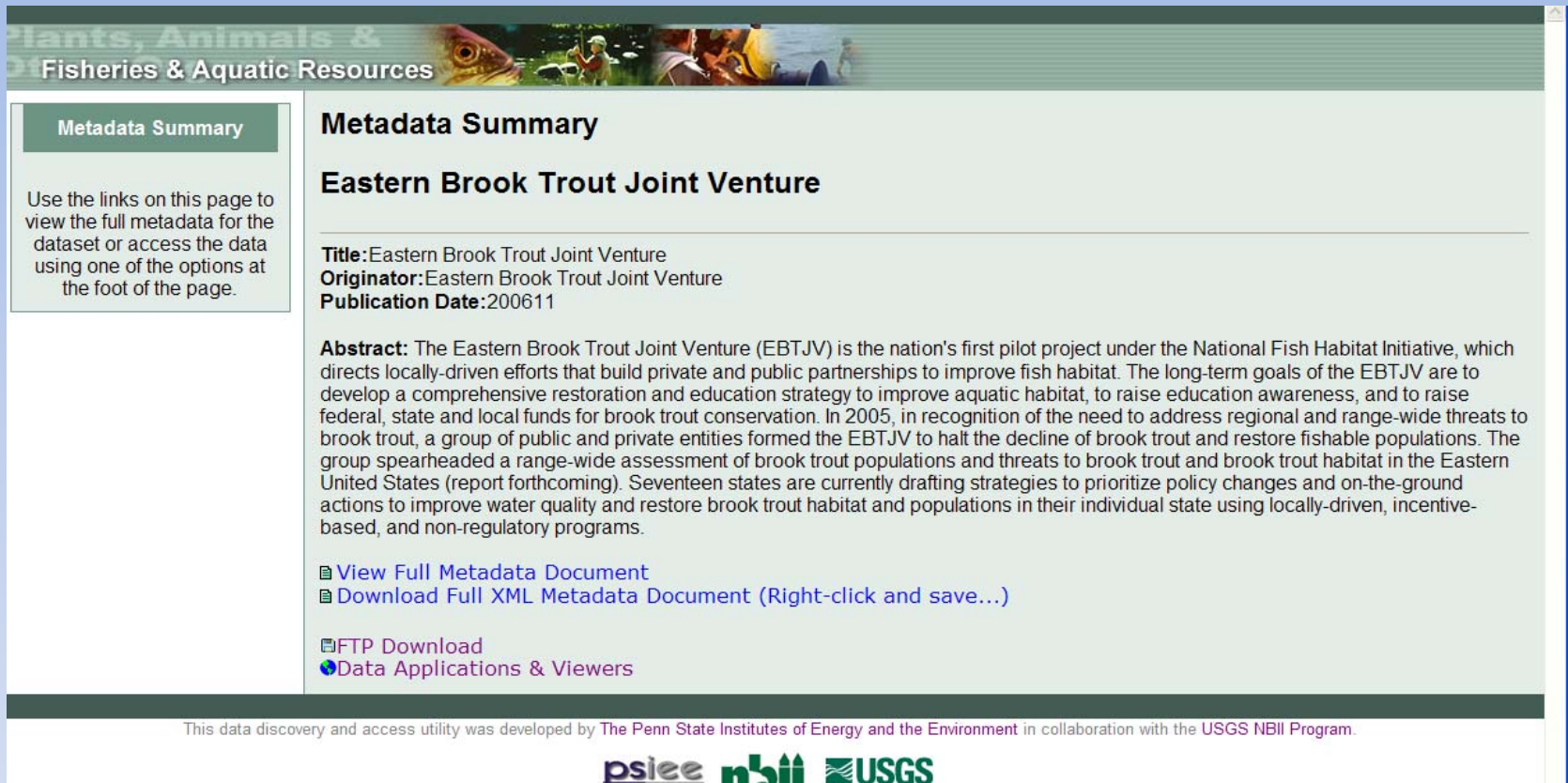
EBTJV Meeting  
Nov 2009

# EBTJV Mapper



- Accessible through [www.easternbrooktrout.org/Data](http://www.easternbrooktrout.org/Data) and Maps or NBII
- View and Download GIS data & metadata through NBII Data Access Wizard
- View Priority Scores for Project Selection – minor clean-up to links
- Publications page

# View and Download GIS data & metadata through NBII Data Access Wizard



The screenshot shows the 'Metadata Summary' page for the 'Eastern Brook Trout Joint Venture' dataset. The page header includes 'Plants, Animals & Fisheries & Aquatic Resources'. A sidebar on the left contains a 'Metadata Summary' tab and instructions: 'Use the links on this page to view the full metadata for the dataset or access the data using one of the options at the foot of the page.' The main content area displays the following information:

- Title:** Eastern Brook Trout Joint Venture
- Originator:** Eastern Brook Trout Joint Venture
- Publication Date:** 200611

**Abstract:** The Eastern Brook Trout Joint Venture (EBTJV) is the nation's first pilot project under the National Fish Habitat Initiative, which directs locally-driven efforts that build private and public partnerships to improve fish habitat. The long-term goals of the EBTJV are to develop a comprehensive restoration and education strategy to improve aquatic habitat, to raise education awareness, and to raise federal, state and local funds for brook trout conservation. In 2005, in recognition of the need to address regional and range-wide threats to brook trout, a group of public and private entities formed the EBTJV to halt the decline of brook trout and restore fishable populations. The group spearheaded a range-wide assessment of brook trout populations and threats to brook trout and brook trout habitat in the Eastern United States (report forthcoming). Seventeen states are currently drafting strategies to prioritize policy changes and on-the-ground actions to improve water quality and restore brook trout habitat and populations in their individual state using locally-driven, incentive-based, and non-regulatory programs.

Links provided for data access:

- [View Full Metadata Document](#)
- [Download Full XML Metadata Document \(Right-click and save...\)](#)
- [FTP Download](#)
- [Data Applications & Viewers](#)

At the bottom of the page, a footer states: 'This data discovery and access utility was developed by The Penn State Institutes of Energy and the Environment in collaboration with the USGS NBII Program.' Logos for psiee, nbii, and USGS are displayed below the footer.

- Attempts to improve download speed:
- Roads were removed from the EBTJV zip file for downloading
- The link now goes to a zip file with everything in it except the roads.
- There is a second zip file with all the files including roads on the ftp site.
- Included in the metadata is a disclaimer describing this.
- This will make quite a difference in download speed.
- → Is this action acceptable by the committee?

# Updates to EBTJV Mapper

- Worked with Mark Hudy to display information we envisioned would be useful to users.
  - Each subwatershed displays
  - Percent forest
  - Percent agriculture
  - Deposition
  - Road density
  - Mixed forest
- Add information to supplement the data and maps.
  - What other enhancements would folks like to see? (catchment information?)
  - Are there other suggestions to improve utility of mapper?

# Technical Support

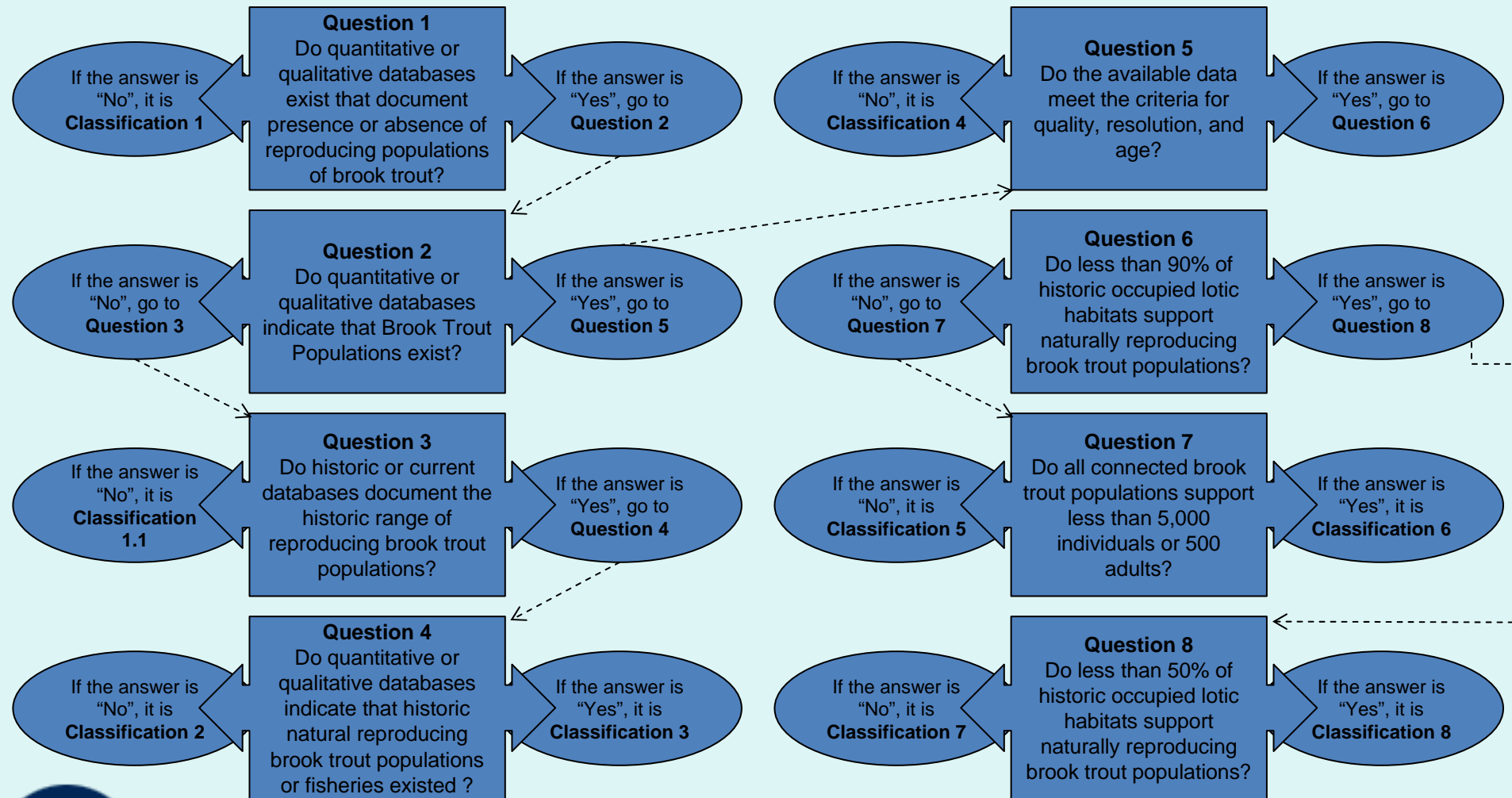
- The following technical support was provided to those who contacted us with their questions.
- Eastern Lands Protected Project (Trout Unlimited/ Virginia)- downloading and metadata questions
- New Hampshire Geological Survey (Concord NH)— downloading
- Pinchot Institute for Conservation (Annapolis)--problem with links
- US Fish and Wildlife Service (Pennsylvania)--problem with links

# Data Subcommittee Meeting

- Review the status of implementing a centralized, web-based, data management system that permits all agencies with brook trout management responsibilities to contribute, store, and access data.
  - We have not moved forward because it is more complex than meets the eye. At current time, a reassessment is needed for a status change.
- Develop guidelines for changing watershed classification designations.
  - Next Slide shows the decision tree for the 12 Digital



# How the classification was determined...



# Data Subcommittee Meeting

- Determine the minimum data standards that will facilitate data sharing and reporting.
- National Fish Habitat Data Sharing:
  - Review and comment on the Standard Operating Procedures (included in packet).



# Collaboration Space Established

## ebjtv.nbii.gov

- NBII Set up a collaboration space at ebtjv.nbii.gov
- Includes separate projects and associated access permissions for the Steering Committee, each of the subcommittees, and the regional workgroups
- Created document that provides use guidelines and instructions
- Limited to participation by Venture members.
  - 10 members have created accounts, little use
  - Chair has uploaded many teleconference notes, dating back to 2004
  - Commitment to use for document exchange and archival would mean less work of a particular individual to maintain.

### Questions

- Is this something that the Partnership wants to continue?
- are there features the Venture would like to use, but need refresher instructions?

# InKind Contributions Tracking

- Worked with Bob Carline to develop Inkind Contributions spreadsheet for members to check-out of portal community, log hours, and check back in.
- Spreadsheet incorporates staff rate estimates so that our inkind contributions can be calculated.
- Was designed to be updated through the portal, however it's use/updates have been very limited (3 members – including Steve and Bob)
- → How should we proceed on this?

# Thank you

Questions?

Shelaine Curd Hetrick

[shetrick@iiaweb.com](mailto:shetrick@iiaweb.com)

Andrea Ostroff

[aostroff@usgs.gov](mailto:aostroff@usgs.gov)